

BRIDGNORTH LIVESTOCK MARKET

WEEKLY REPORT – 31.10.23



WASHING OUT VEHICLES/TRAILERS

Please note that you **MUST WASH OUT** your vehicle/trailer after unloading at this market. **IF YOU DO NOT WASH OUT** your vehicle you **MUST** fill out an "Undertaking to Cleanse and Disinfect Vehicle" FMAW27 Form which are available from the Market Office.

70 PRIME CATTLE /3 CULL COWS

Auctioneer – Mark Burgoyne 07831 192603

Numbers were tight once again with a much more varied sample penned today. Averages reflected this but with the very best cattle seeing a dearer trade with 15 cattle selling to 300p/kg or above.

A small sample of steers saw a fair trade with very lean cattle depleting average figures. Angus cross steers topped at 290p/kg with fit Herefords to £1808 in the lump.

Some great heifers presented this morning topped at 359p/kg or £2018 as a whole. Any clean cattle with meat and finish sold to advantage and more cattle were required to satisfy demand.

Bull numbers suffered a little today and mainly consisted of black & whites or dairy bred continentals. Suckler bulls sold to 260p/kg or £1664 in the lump.

Young, fit Blonde cows sold to 188p/kg for 698kg or £1312, with aged Limmies to 136p/kg. Dexter cows sold to 70p/kg.

53 CLEAN CATTLE FORWARD

ONLY 5 STEERS SOLD TO OV. AV. 238P/KG

Handyweight 552kg Angus crosses from Mrs B topped the day here at 290p/kg, with 602kg Limmies from Andrew Carter to 282p/kg. Heavy thick Hereford crosses from Phil Edwards added up well at £1807.80 for 786kg.

MORE STEERS REQUIRED PLEASE

48 HEIFERS SOLD TO OV. AV. 275P/KG

Two great runs of cattle from Harvey Parkes and Sue Evans stole most honours here with the Evans' winning the day with their 562kg Limmies at 359p/kg (£2017.58). Heavier Limmies from Harvey Parkes closely followed at 358p/kg for 528kg. Other vendors of note were Neale Dalton selling 540kg have to 326p/kg and Harold Pugh selling 536kg to 320p/kg.

ONLY 17 BULLS SOLD TO OV. AV. 207P/KG

With best quality in short supply, Dave & John Preece took top spot with their 640kg Limousin selling to 260p/kg,

with their Angus to 246p/kg for 626kg. Nigel Lloyd's handy Angus sold to 251p/kg for 498kg. Black & Whites sold to 220p/kg for 608kg.

MORE WELL FINISHED BULLS NEEDED

AFU CATTLE VENDORS PLEASE NOTE:

Could producers selling in the Red Market from Approved Finishing Units (AFU) please provide a copy of your licence (TB24h) for our records. This is a requirement of our licencing with the Veterinary Inspectorate.

STEERS P/KG

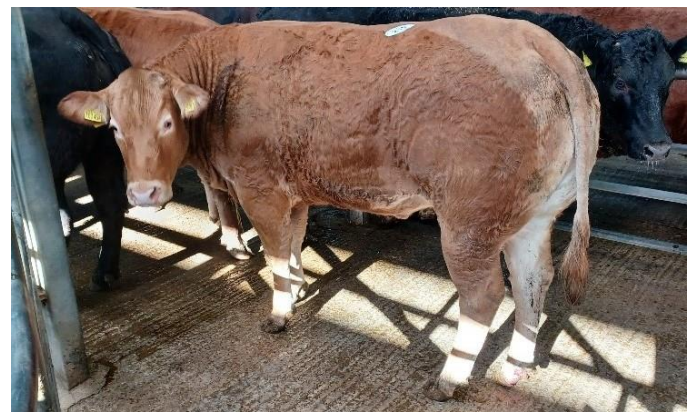
290p/kg	552kg	19m	AAx	C Burgoyne
282p/kg	602kg	26m	LIMx	AJ Carter

STEERS £/HEAD

£1807.80	786kg	25m	Hex	RP Edwards
£1697.64	602kg	26m	LIMx	AJ Carter
£1600.80	552kg	19m	AAx	C Burgoyne
£1545.60	644kg	19m	LIMx	AJ Carter

HEIFERS P/KG

359p/kg	562kg	17m	LIMx	RC Evans (Curdale)
358p/kg	528kg	16m	LIMx	EP Parkes & Sons
348p/kg	544kg	17m	LIMx	RC Evans (Curdale)
346p/kg	554kg	17m	LIMx	EP Parkes & Sons
346p/kg	542kg	18m	LIMx	RC Evans (Curdale)
338p/kg	530kg	16m	LIMx	EP Parkes & Sons
337p/kg	576kg	17m	BRB	RC Evans (Curdale)
328p/kg	528kg	16m	LIMx	EP Parkes & Sons
326p/kg	540kg	26m	LIMx	LH Dalton & Son
325p/kg	514kg	23m	LIMx	LH Dalton & Son
320p/kg	536kg	19m	LIMx	RH Pugh & Son
316p/kg	538kg	18m	LIMx	K&N Fieldhouse
316p/kg	524kg	16m	LIMx	EP Parkes & Sons
312p/kg	542kg	18m	LIMx	LH Dalton & Son
308p/kg	564kg	18m	LIMx	RC Evans (Curdale)



Livestock & Auction Centre, Tasley, Bridgnorth, Shropshire, WV16 4QR

T: 01746 762 666 | F: 01746 767 475

E: enquiries@nockdeighton.co.uk | www.nockdeightonagricultural.co.uk

HEIFERS £/HEAD

£2017.58	562kg	17m	LIMx	RC Evans (Curdale)
£1941.12	576kg	17m	BRB	RC Evans (Curdale)
£1916.84	554kg	17m	LIMx	EP Parkes & Sons
£1893.12	544kg	17m	LIMx	RC Evans (Curdale)
£1890.24	528kg	16m	LIMx	EP Parkes & Sons
£1875.32	542kg	18m	LIMx	RC Evans (Curdale)
£1791.40	530kg	16m	LIMx	EP Parkes & Sons
£1760.40	540kg	26m	LIMx	LH Dalton & Son
£1739.52	604kg	23m	LIMx	LH Dalton & Son
£1737.12	564kg	18m	LIMx	RC Evans (Curdale)

BULLS P/KG

260p/kg	640kg	18m	AAx	A Preece & Son
251p/kg	498kg	19m	LIMx	NJ & HM Lloyd
246p/kg	626kg	15m	AAx	A Preece & Son
240p/kg	606kg	15m	BRB	Griffiths & Spearing
234p/kg	558kg	11m	BRB	Griffiths & Spearing

BULLS £/HEAD

£1664.00	640kg	19m	LIMx	A Preece & Son
£1539.96	626kg	15m	AAx	A Preece & Son
£1454.40	606kg	15m	BRB	Griffiths & Spearing

DAIRY BULLS P/KG

220p/kg	608kg	14m	FR	SB Lloyd & Son
212p/kg	552kg	14m	FR	SB Lloyd & Son
204p/kg	554kg	14m	FR	SB Lloyd & Son

DAIRY BULLS £/HEAD

£1337.60	608kg	14m	FR	SB Lloyd & Son
£1205.16	726kg	23m	HOL	SB Lloyd & Son
£1170.16	552kg	14m	FR	SB Lloyd & Son

OTM COW P/KG

188p/kg	698kg	31m	CONT	TE Jones & Son
136p/kg	572kg	196m	LIMx	TE Jones & Son
70p/kg	430kg	100m	DEX	TKG Collings

OTM COW £/HEAD

£1312.24	698kg	31m	CONT	TE Jones & Son
£777.92	572kg	196m	LIMx	TE Jones & Son
£301.00	430kg	100m	DEX	TKG Collings

IMPORTANT NOTICE TO ALL VENDORS OF SHEEP:

- Please ensure all sheep are tagged in the approved manner before arrival to the auction
- Lamé or unsound sheep will NOT be accepted and will be returned to the vendor
- All sheep presented in Bridgnorth are deemed to be fit for human consumption, free from imperfections and have completed any veterinary medicine withdrawal

940 LAMBS

Auctioneer – Martin Clack 07977 067519

A very similar entry of lambs and trade to last week with considerable difference between the top and bottom prices.

Best lambs over 300p/kg to 308p/kg from George Evans and heavy good-shaped lambs of 46kg to 294p/kg from Pete Morris and a top price per head of £141.60 for a pair of 59kg Spotty x Texel from Sarah Levi.

Lambs weighing 39kg to 45kg the easiest sold with commercial well-fleshed lambs 270p/kg plus. Several consignments of under-finished lambs would detract from the overall average and possibly be worth much more being sold as store lambs.

Top Prices p/kg

308p/kg	42.5kg	MD & EA Evans
296p/kg	45.5kg	IGC Morris
294p/kg	46.0kg	IGC Morris
294p/kg	41.5kg	EP Parkes & Son
289p/kg	44.0kg	N Fieldhouse

Top Prices £/Head

£141.60	59.0kg	S Levi
£138.00	57.5kg	Conington Farms
£137.50	58.5kg	Conington Farms
£135.60	56.5kg	Conington Farms
£135.20	46.0kg	IGC Morris

IMPORTANT NOTICE TO ALL EXPORTERS OF SHEEP

As from 13th December 2023 changes in legislation will require each farm to have an annual farm visit by a vet who will issue a VAN number, without which your sheep will NOT be eligible for export. Farm Assured holdings will be exempt. Please contact your vet to ensure your sheep are saleable during December 2023 and into 2024.

611 EWES

Auctioneer – Martin Clack 07977 067519

Texel ewes sold to £188 from Richard Yates and a super pen of Suffolks from Rob Lilley sold to £147. North Country Mules sold to £110 with plainer ewes, as every week, very well sold.

Heavy Texel rams sold to £178 from R & O Glass and Continental, shapely ewes were keenly sought after with customers very interested in meat-to-bone ratio.

Several consignments of hill ewes sold to £67 for improved Welsh, £65 for Beulahs and plain Swales to £36.

Top Prices £/Head

£188.00	Texel	H Yates
£178.00	Texel	R & D Glass
£160.00	Texel	S Odell
£153.00	Texel	J Pritchard
£148.00	Texel	EW & H Fletcher
£148.00	Texel	EW & H Fletcher

SHEEP VENDORS PLEASE NOTE:

Recently the tagging of sheep in Bridgnorth has become a little relaxed. A visitation of Shropshire Trading Standards has identified a book full of tagging issues. Even though Nock Deighton Agricultural staff will read non-EID ear tags and our vendor printouts represent 100% accuracy, it is a requirement to have all sheep tagged and compliant with current legislation BEFORE unloading in the Auction.

ALL SHEEP MUST BE TAGGED WITH ELECTRONIC TAGS

SUPPLEMENTARY ST LUKE'S FAIR

THIS FRIDAY 3rd NOVEMBER 2023

Sheep: 11.00am

Cattle: 12.00 noon

Entries to date include:

120 store cattle

600 Store/Breeding Sheep

Catalogue Online and Facebook

Further Entries Invited

Contact: Mark Burgoyne 07831 192603

Martin Clack 07977 067519 or Ollie Clack 07891 343673

NEXT STORE SALE

FRIDAY 17th NOVEMBER 2023

*Entries invited for the Catalogue by
12.00 noon on Monday 13th November*

Contact: Mark Burgoyne 07831 192603


Martin Clack 07977 067519 or Ollie Clack 07891 343673

ANTIQUES & COLLECTABLES AUCTIONS

For over 50 years Nock Deighton Agricultural LLP (NDA) have been holding twice-monthly auctions of antiques, collectables and household furniture. The average lots per auction are in excess of 800 up to 1000, giving a good depth and spread of interest to all who take part. Lots can go for as little as £1 for a mixed box or as much as £3,000 for a specialist item – such as the Regency wrought-iron pad-footed garden bench (below) - which recently sold following some intense bidding from buyers online and in the sale room.



Dylan Ward and the Auction Team offer a complete service, including house clearances, appraisals, valuations and advice on the best route of sale. Post-sale we can offer post and packing to UK destinations for smaller light items.

Sales are now catalogued with a full pictorial version displayed online, with live internet bidding, as well as bidding in the saleroom. The new Facebook  page is available by searching for **Nock Deighton Antique & Collectable Auctions** and this shows a selection of lots for forthcoming sales.

For all Saleroom enquires please contact Dylan Ward on 07415 815266 or 01746 762666 or email antiques@nockdeighton.co.uk

The next Furniture/Antiques Sale will be held on

Wednesday 15th November 2023

Sale starts at 10.00am

The auction will be held on-line at

www.easyliveauction.com

or attend in person at the Sale Room in Bridgnorth

Viewing days - Monday 13th November &



AMC - Providing Certainty in Uncertain Times

The degeneration of the BPS scheme, combined interest rates rising so quickly and the unprecedented levels of volatility in both commodity prices and input costs, means that forecasting future cashflow is perhaps more difficult than at any other point in recent memory - something which is clearly at the forefront of many farmers' minds.

Such uncertainty is leading to many businesses consolidating by using any surplus cash to reduce debt, rather than investing for the future. For those who do not have the means for debt reduction or are looking to align themselves to take advantage of whatever opportunities emerge from such uncertainty, now may be an appropriate time to review the structure of existing long-term finances to ensure that the business is more resilient, whatever the future may hold.

When considering finance in such a way the rule of thumb is always the same, to borrow over as long as possible (to minimise monthly outgoings) and then to repay as quickly as possible (to minimise the total interest paid to the lender).

Following this principle means that cashflow is not unnecessarily committed to existing loan repayments such that not only can any leaner years be managed more comfortably but capacity remains to service further debt in order to take advantage of unexpected opportunities, such as buying neighbouring land.

When borrowing from AMC, loans can be available for up to 30 years and, when borrowing on a variable rate of interest, the borrower is at liberty to make additional capital repayments at any point in time, hence businesses can borrow over a very long term but then repay much sooner, if cashflow allows.

Opportunities to buy neighbouring land rarely present themselves at the right time and hence AMC's unique ability to offer long-term interest-only funding also allows such opportunities to be taken more with more confidence, while still servicing other commitments.

For more information regarding how reviewing your business finances may be beneficial, speak to Rob McCabe in full confidence on (office) **01746 762666** or (mobile) **07970 981183**

SUSTAINABLE FARMING INCENTIVE (SFI)

- 3-Year Scheme for Environmental Land Management Options
- Payments made quarterly

Capital Items are available under the
Capital Only Scheme



Contact James or Camilla on
01746 762666 for advice and assistance

LAND FOR SALE

**SOUTH WEST OF STABLEFORD BRIDGE,
BADGER LANE, STABLEFORD, BRIDGNORTH**

59.18 ACRES LAND

ARABLE, PASTURE AND RIVER MEADOWS



- Approximately 59.18 acres (23.94 hectares) of arable and pasture land
- Attractive river meadow land adjacent to the River Worfe
- Potential for lake creation (subject to planning)
- Potential for environmental management/ carbon offsetting
- Approximately 1.5 miles of single bank fishing on the River Worfe
- Productive pastures provide excellent grazing while the river meadow areas also provide opportunity to engage with environmental management schemes

For Sale by Private Treaty
As a whole or may divide into lots
GUIDE PRICE: CIRCA £500,000

FOR SALE

**DEVELOPMENT OR SELF-BUILD OPPORTUNITY FOR
TWO PLOTS, CLUDDLEY, WELLINGTON, TF6 5DR**



Opportunity to build energy conscious homes in a semi-rural location. Full planning has been granted

- Plot size over half an acre per plot
- Bespoke design based on sustainable Passivhaus
- Near to the market town of Wellington and the Wrekin

**GUIDE PRICE: CIRCA £420,000 FOR THE WHOLE or
£210,000 PER PLOT**

FOR SALE

**DUDMASTON STUD
TUCKHILL, SIX ASHES, WV15 6EW**

**AN EQUESTRIAN PROPERTY WITH
A RANGE OF FACILITIES**



- Extending to 33.80 acres in total
- 30.58 acres of pasture
- 8 purpose-built stables
- Outdoor arena and lunge pen
- Three-bedroom log cabin
- Steel portal-framed barn

GUIDE PRICE £825,000

LAND FOR SALE

**LAND FORMERLY PART OF LLWYN NEUADD
CWMDUAD, CARMARTHEN, SA33 6AU**

**AN UPLAND PARCEL OF LAND TOTTALLING
92.27 ACRES OR THEREABOUTS**



- Approximately 92.27 acres of gently sloping upland pasture
- Potential for the following alternative uses subject to planning, ie forestry, renewable energy or carbon offsetting
- Lying 265m to 280m above mean sea level
- For Sale by Private Treaty

OFFERS OVER £450,000